



Q Series

High Performance Class D Amplifier

FOR THE QUALITY



The new Q series amplifier is designed for professional sound systems requiring maximum performance and portability. It is 2U class D amplifier switching with switching power supply. With reliable extended power, light weight, smart signal display and advanced protection circuit, Q series provides unmatched performance at real value.

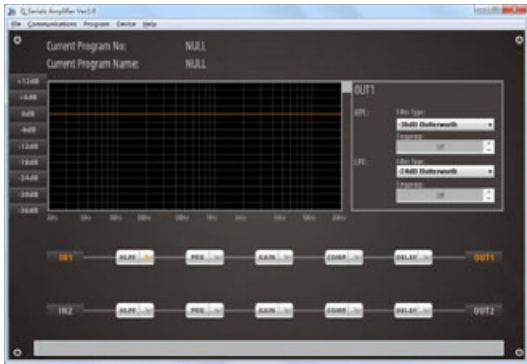
Key Features and Benefits

- Housed in a rugged, all-steel 2U chassis.
- Switch mode power supply ensures an improved amplifier performance at high output levels.
- Easy to configure in stereo / parallel / bridge modes.
- Software programmable via PC (USB port) .
- Electronic balance XLR inputs, touch proof binding post and Speakon output.
- Variable speed fan automatically adjusted by temperature with air flow front to back.





- High efficient Class D amplifier with low weight, low distortion and fast response.
- Amplifier protection includes short circuit, overload, excessive temperature and DC on outputs.



- Q Series professional amplifier contains built-in DSP with control of frequency response, crossover point, crossover slop, delay and protection for two channels.
- Up to 50 presets can be saved.
- Auto Back Up option. When enabled in stereo mode the left input channel becomes the master input and output. If for any reason the left input fails, the DSP will switch to take signal from the right channel.



System specification

	Model	Q3i	Q5i	Q7i
Power output (dynamic)	Stereo & parallel Mode(8Ω)	550W/CH	850W/CH	1500W/CH
	Stereo & parallel Mode (4Ω)	1000W/CH	1500W/CH	2200W/CH
	Stereo & parallel Mode (2Ω)	1500W/CH	2500W/CH	3500W/CH
	Bridged mono Mode (8Ω)	1500W	2500W	4000W
	Bridged mono Mode (4Ω)	3000W	5000W	7000W
Power output under limited		300W/CH	500W/CH	700W/CH
Distortion(typical) 1KHz at full rated power		<1% THD		
S/N (A-weighted)		91dB		
Input Sensitivity		1V		
Maximum Input Level		4V		
Output Circuitry		Class D		
Peak Output Voltage		100V(Per Channel) 200V(Bridged)	130V(Per Channel) 260V(Bridged)	170V(Per Channel) 340V(Bridged)
Votage Gain (8Ω)		37dB	39dB	41.5dB
Standard Consumption Current 1/8Power (2Ω)		4.5A	6.7A	9.2A
Max Consumption Current 1/3/Power (2Ω)		10A	15.5A	20.5A
Frequency Response (8Ω)		20Hz~20kHz(±0.5dB)		
Damping Factor		>200:1(100Hz)		
Input Impedance (Ω)		20K(Balanced),10k(Unbalanced)		
Input Connecetor		2 x XLR		
Output Connecetor		2 x XLR + 2 x NL4 + 2x Binding posts		
Power Supply		AC 220-230V 50Hz/60Hz		
Dimensions(W x D x H)		483mm x 336mm x 89mm		
Net Weight		8.2kg	8.5kg	9kg
Gross Weight		9.5kg	9.5kg	10kg

